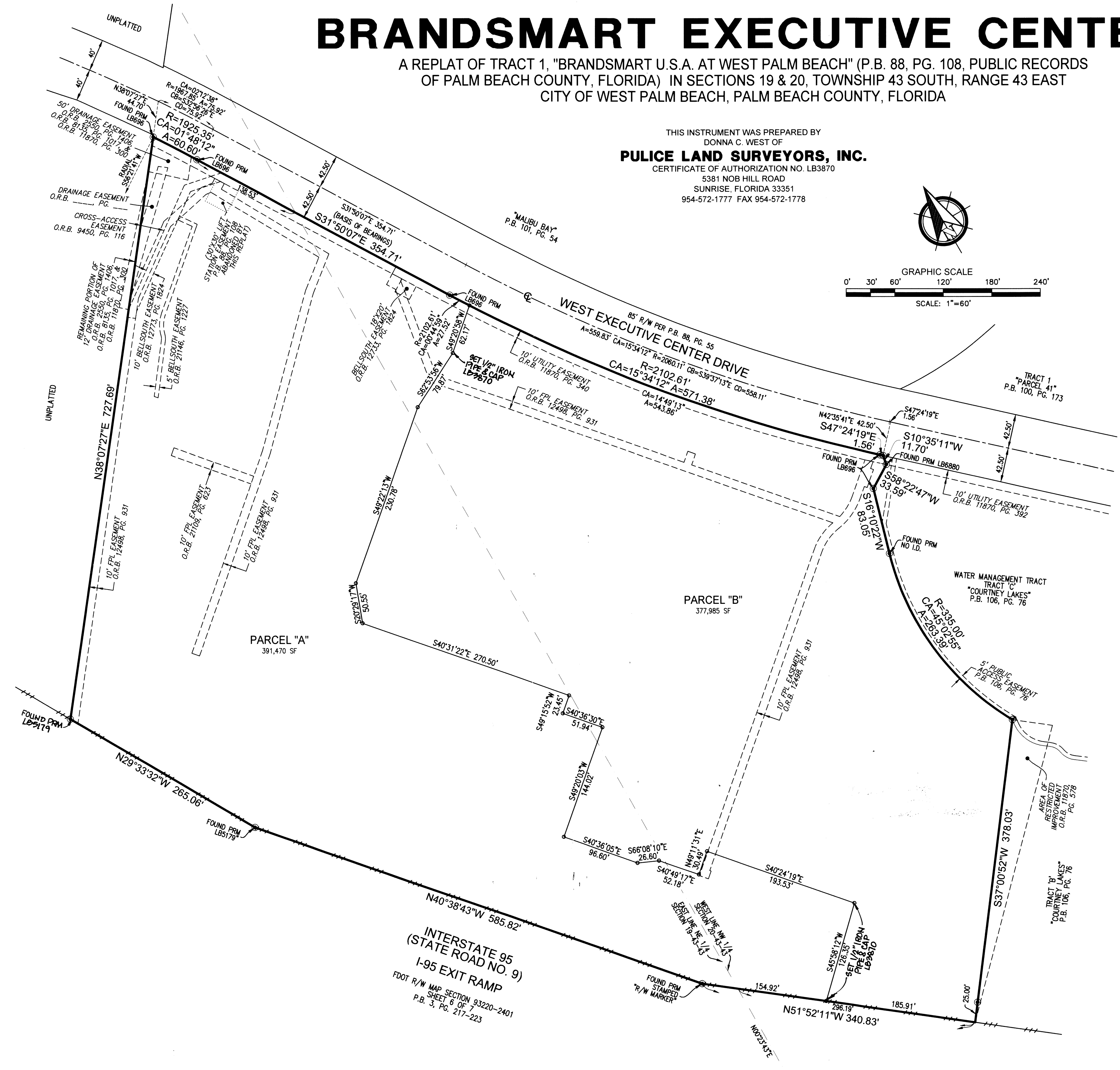
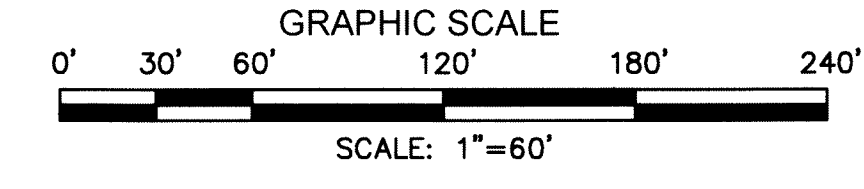
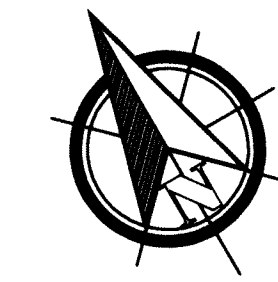


# BRANDSMART EXECUTIVE CENTER

A REPLAT OF TRACT 1, "BRANDSMART U.S.A. AT WEST PALM BEACH" (P.B. 88, PG. 108, PUBLIC RECORDS OF PALM BEACH COUNTY, FLORIDA) IN SECTIONS 19 & 20, TOWNSHIP 43 SOUTH, RANGE 43 EAST CITY OF WEST PALM BEACH, PALM BEACH COUNTY, FLORIDA

THIS INSTRUMENT WAS PREPARED BY  
DONNA C. WEST OF  
**PULICE LAND SURVEYORS, INC.**  
CERTIFICATE OF AUTHORIZATION NO. LB3870  
5381 NOB HILL ROAD  
SUNRISE, FLORIDA 33351  
954-572-1777 FAX 954-572-1778



- LEGEND & ABBREVIATIONS:**
- ⊙ = SET PERMANENT REFERENCE MONUMENT (PRM)  
LB3870 UNLESS OTHERWISE NOTED
  - = SET MAG NAIL WITH 1.2" BRASS WASHER STAMPED "LB3870"
  - ⊕ = CENTERLINE
  - = FDOT LIMITED ACCESS R/W LINE
  - A = ARC LENGTH
  - CA = CENTRAL ANGLE
  - CB = CHORD BEARING
  - CD = CHORD DISTANCE
  - FDOT = FLORIDA DEPARTMENT OF TRANSPORTATION
  - FPL = FLORIDA POWER & LIGHT COMPANY
  - I.D. = IDENTIFICATION
  - LB = LICENSED BUSINESS
  - O.R.B. = OFFICIAL RECORDS BOOK
  - P.B. = PLAT BOOK
  - PG. = PAGE
  - PRM = PERMANENT REFERENCE MONUMENT
  - R = RADIUS
  - R/W = RIGHT-OF-WAY
  - SF = SQUARE FEET

INTERSTATE 95  
(STATE ROAD NO. 9)  
I-95 EXIT RAMP  
FDOT R/W MAP SECTION 93220-2401  
SHEET 6 OF 7  
P.B. 3, PG. 217-223